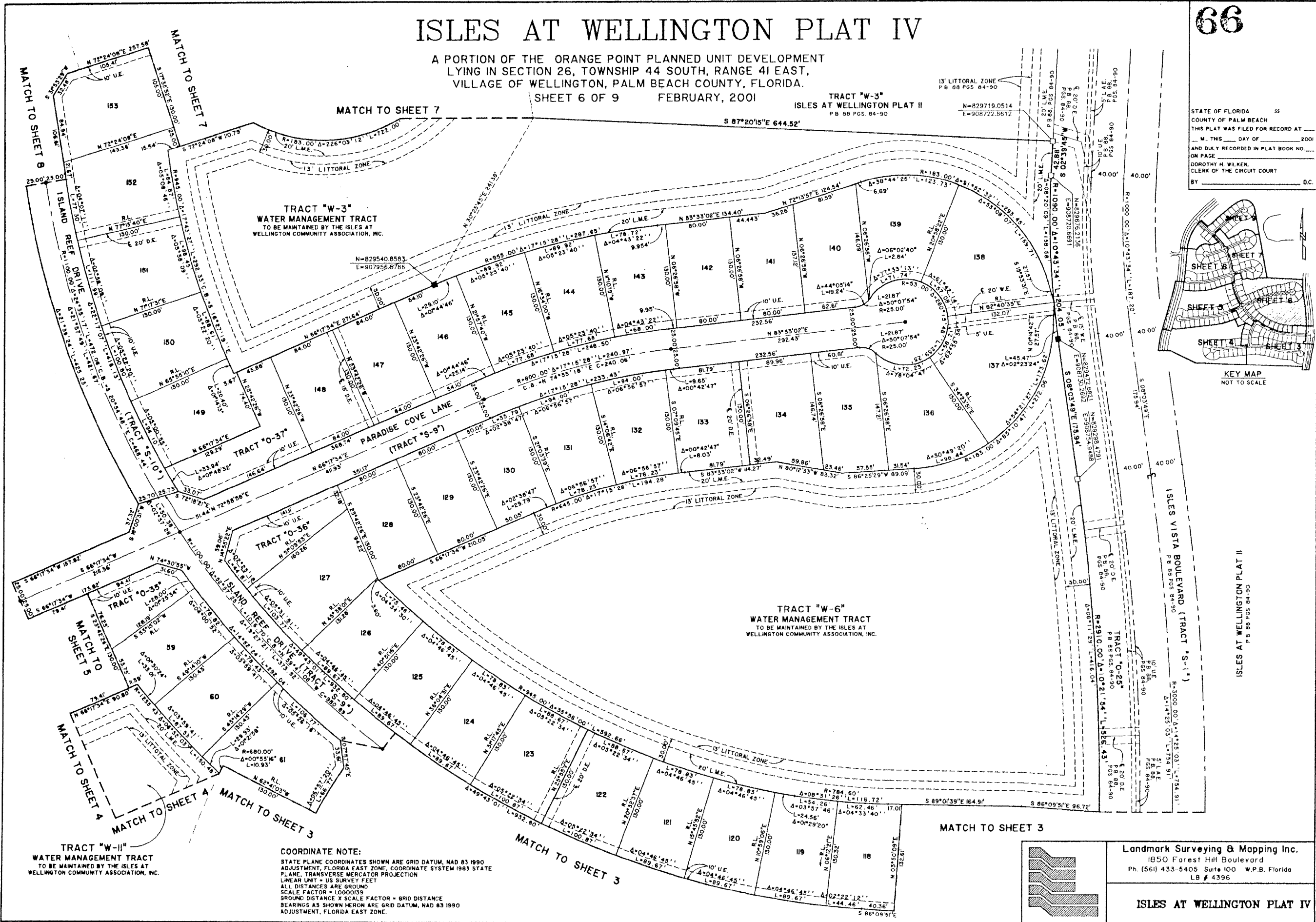
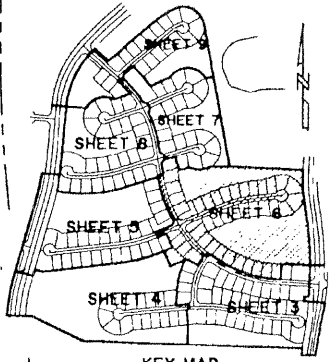


ISLES AT WELLINGTON PLAT IV

A PORTION OF THE ORANGE POINT PLANNED UNIT DEVELOPMENT
LYING IN SECTION 26, TOWNSHIP 44 SOUTH, RANGE 41 EAST,
VILLAGE OF WELLINGTON, PALM BEACH COUNTY, FLORIDA.
SHEET 6 OF 9 FEBRUARY, 2001



STATE OF FLORIDA SS
 COUNTY OF PALM BEACH
 THIS PLAT WAS FILED FOR RECORD AT
 M. THIS DAY OF 2001
 AND DULY RECORDED IN PLAT BOOK NO. ON PAGE
 DOROTHY H. WILKEN,
 CLERK OF THE CIRCUIT COURT
 BY D.C.



ISLES AT WELLINGTON PLAT II
P.B. 88 PGS. 84-90

Landmark Surveying & Mapping Inc.
 1850 Forest Hill Boulevard
 Ph. (561) 433-5405 Suite 100 W.P.B. Florida
 LB # 4396

ISLES AT WELLINGTON PLAT IV

COORDINATE NOTE:
 STATE PLANE COORDINATES SHOWN ARE GRID DATUM, NAD 83 1990
 ADJUSTMENT, FLORIDA EAST ZONE, COORDINATE SYSTEM 1983 STATE
 PLANE, TRANSVERSE MERCATOR PROJECTION
 LINEAR UNIT = US SURVEY FEET
 ALL DISTANCES ARE GROUND
 SCALE FACTOR = 1.0000139
 GROUND DISTANCE X SCALE FACTOR = GRID DISTANCE
 BEARINGS AS SHOWN HEREON ARE GRID DATUM, NAD 83 1990
 ADJUSTMENT, FLORIDA EAST ZONE.